



Site : 245, 246, 247, Nemi Nagar Vistar, Vaishali Nagar, Jaipur

Classic
Residency



Builder & Developers
Arihant Build Creation Pvt. Ltd.
81, Gyan Vihar Colony, Nirman Nagar, DCM,
Ajmer Road, Jaipur

Promoters :
• Anil Nahata • Amit Kotecha
• Abhijit Patawari • Kuldeep Kotecha

For Booking Contact
9001919111

Architect :
Space Grid

Completed Projects



Vardhman Apartments, Banipark



Western Heights, Shyam Nagar



Vardhman Residency, Ajmer Road



Vardhman Majesty, Shyam Nagar



Arihant Enclave, Ajmer Road



Arihant Residency, Ajmer Road

Ongoing Project



Arihant Palm, Ajmer Road

Upcoming Project



Royal Castle, Chitrakoot



Narayan Vihar

Classic
Residency

*A modern icon of luxury lifestyle is
quietly taking shape*

A charming blend with the best of modern amenities

Welcome to **Classic Residency**. The rays of new hopes and aspirations with the morning sun drop into your home. A name that will set trends and definition of high and luxury living. Walk into a concept of living that will fit your modern, trendy, energetic and high class life style.

Classic Residency is a modern well ventilated residential complex, will ensure health and vitality in every way. This is where you are bestowed with your housing pride and reveal the aspiration of owning a dream home.

Location that speak for itself. Classic residency located in the ever serene and classy realms of **Chitrkoot, Vaishali Nagar**. It's destined to change your way of life. The excellent location will ensure good connectivity's and lush compilation of comfort, convenience, security & luxury.

*Classic
Residency*



GROUND FLOOR PLAN



Block-A



GROUND FLOOR

Flat No.	Super Built-up Area	BHK
G-1	1615 Sq. Ft.	3BHK
G-2	1000 Sq. Ft.	2BHK
G-3	1115 Sq. Ft.	2BHK

TYPICAL FLOOR PLAN



Block-A



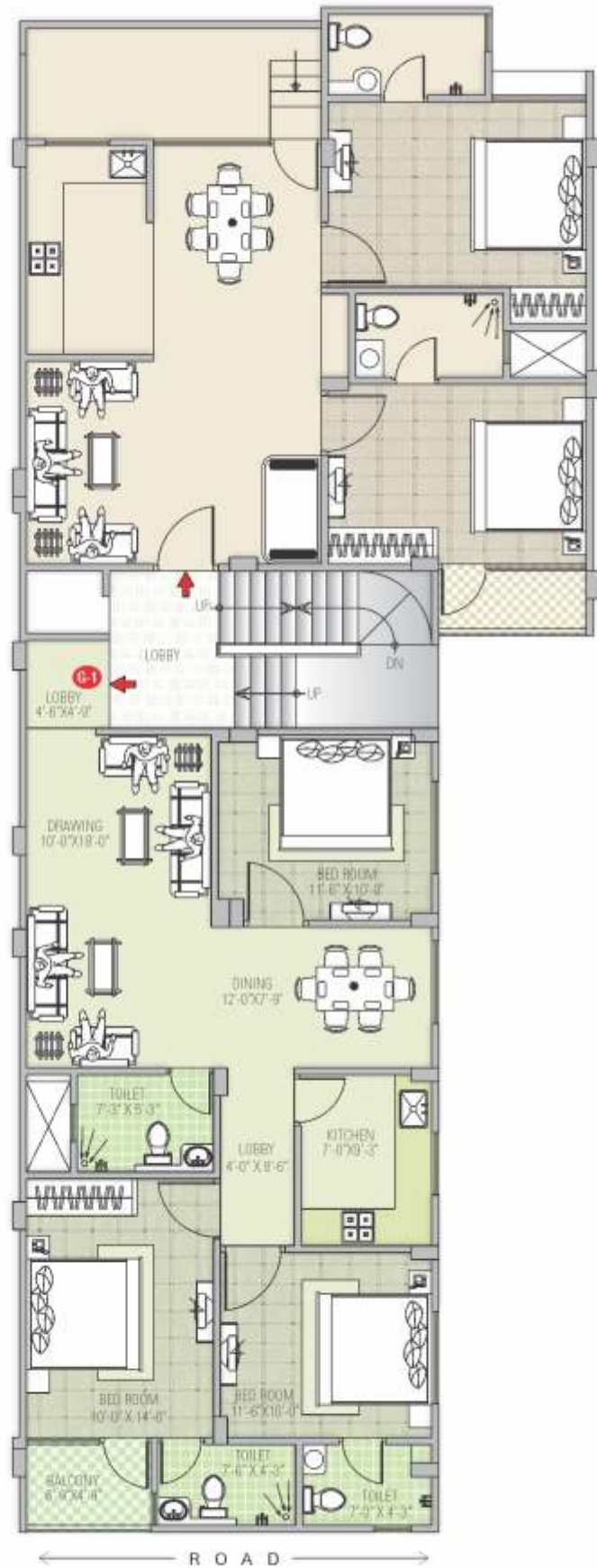
FIRST FLOOR

Flat No.	Super Built-up Area	BHK
101	1783 Sq. Ft.	3BHK
102	1220 Sq. Ft.	2BHK
103	1112 Sq. Ft.	2BHK

SECOND FLOOR

Flat No.	Super Built-up Area	Terrace Area	BHK
201	1783 Sq. Ft.	980 Sq. Ft.	3BHK
202	1220 Sq. Ft.	—	2BHK
203	1112 Sq. Ft.	—	2BHK

GROUND FLOOR PLAN



Block-B



GROUND FLOOR

Flat No.	Super Built-up Area	BHK
G-1	1316 Sq. Ft.	3BHK
G-2	1230 Sq. Ft.	2BHK

TYPICAL FLOOR PLAN



Block-B



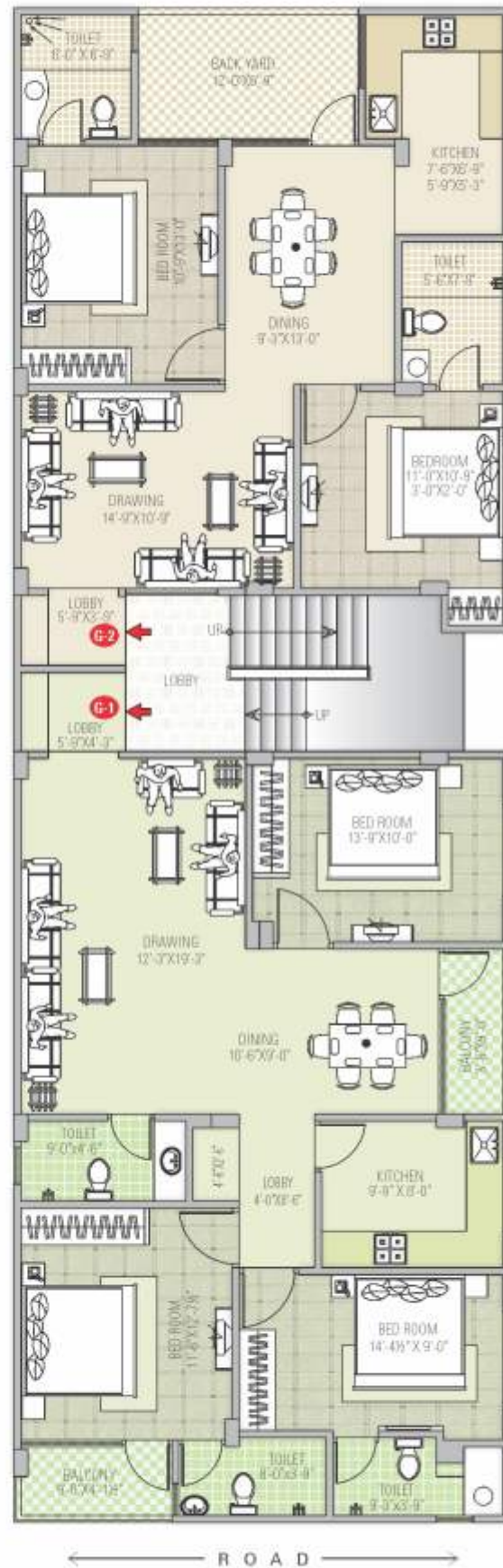
FIRST FLOOR

Flat No.	Super Built-up Area	BHK
101	1549 Sq. Ft.	3BHK
102	1169 Sq. Ft.	2BHK

SECOND FLOOR

Flat No.	Super Built-up Area	Terrace Area	BHK
201	1549 Sq. Ft.	758 Sq. Ft.	3BHK
202	1169 Sq. Ft.	—	2BHK

GROUND FLOOR PLAN



GROUND FLOOR

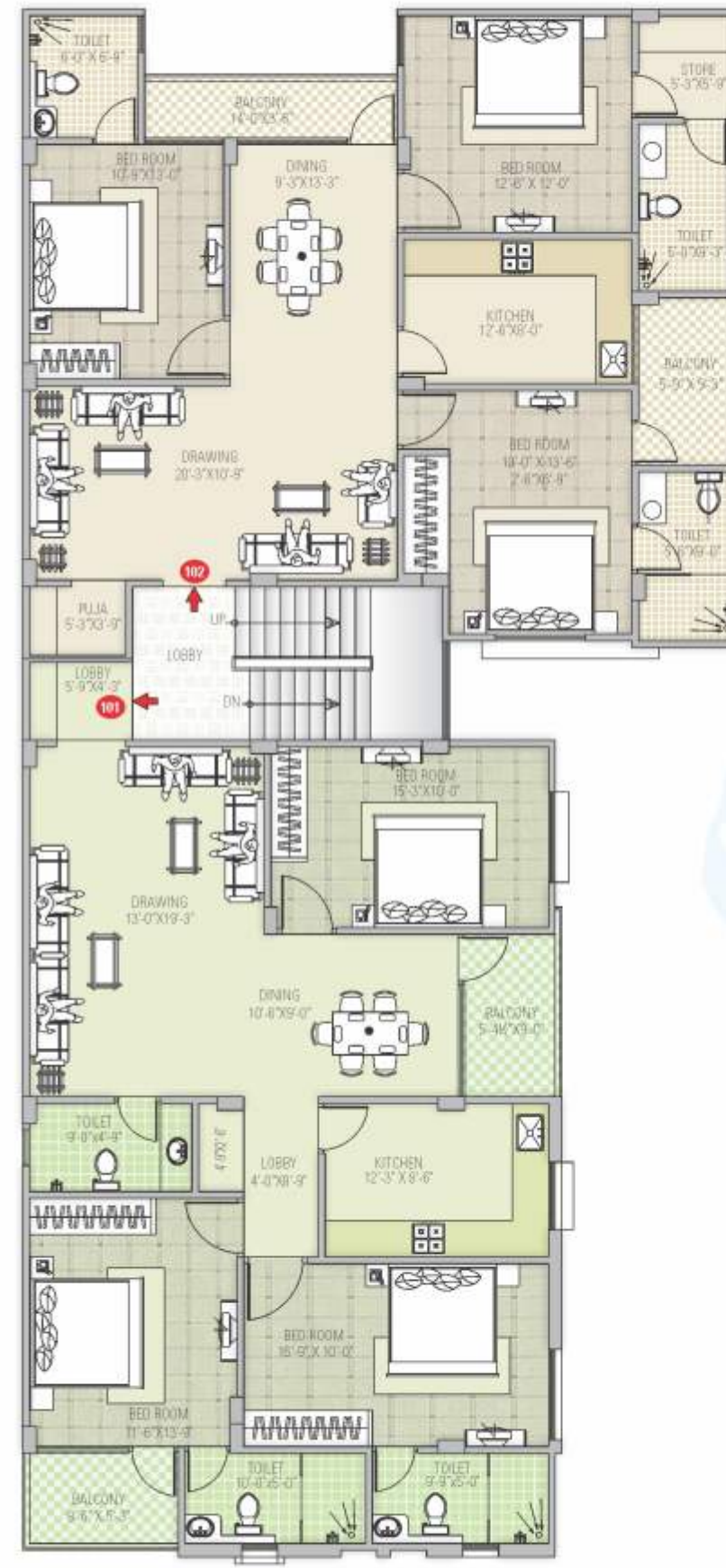
Flat No.	Super Built-up Area	BHK
G-1	1545 Sq. Ft.	3BHK
G-2	1185 Sq. Ft.	2BHK

Block-C



N

TYPICAL FLOOR PLAN



Block-C



N

FIRST FLOOR

Flat No.	Super Built-up Area	BHK
101	1825 Sq. Ft.	3BHK
102	1734 Sq. Ft.	3BHK

SECOND FLOOR

Flat No.	Super Built-up Area	Terrace Area	BHK
201	1825 Sq. Ft.	866 Sq. Ft.	3BHK
202	1734 Sq. Ft.	775 Sq. Ft.	3BHK

Experience the elegant lifestyle
at *Classic Residency*

salient features...



Wood Work

- Wooden wardrobe in 2 bedrooms.
- Windows having glass & wire mesh panels with safety grills.
- Premium Quality Flush Doors with Designer Laminates.
- Designer fittings on doors & windows.

Toilet

- Designer Ceramic tiles in toilet up to 7' height on wall
- Ceramic Tiles on Floor in toilet.
- Premium Quality C.P. fitting
- Designer Sanitary Wares.
- Curtain Partition in Master bedroom toilet.

Kitchen

- Semi Modular Kitchen.
- Black granite working counter
- Stainless steel sink.
- 2' Tiles above the counter
- Provision for geyser in Kitchen
- Provision for R.O.

Electrical

- Modular switches with concealed Copper wiring.
- TV/Telephone/A.C./Cooler point in all the rooms at appropriate places.

- Decorative light in False Ceiling at drawing & dining Area.
- Inverter Wiring in Each Flat

Security

- Intercom / EPBAX facility
- Video door Phone
- 2 CCTV Cameras in Parking Area

Apartment Features

- Marble / Vitrified Tiles Flooring
- Designer false ceiling in drawing/dining area.
- POP finish on wall & ceiling with cornices beadings & decorative flowers.
- Premium Quality Distemper paint on wall & ceiling.
- Satin Finish Paint On Window
- Servant room/ Stores on Extra Cost with intercom facility
- Rain water harvesting system.
- Earthquake resistant framed structure.
- DTH connection in each flat
- Gymnasium cum Fitness Center.
- Multipurpose Hall (With Table Tennis, Carom, Chess Board.)

Designed to meet all your aspirations of a luxurious home that is comfortable, secure and affordable, with splendid architectural design for a look that is contemporary and elegant. *Classic Residency* come to you with finest amenities to suit your needs and requirements.

